



VisAI Labs

HOW TO OVERCOME COMMON PARCELING CHALLENGES WITH AUTOMATED DIMENSIONING SOLUTIONS

Until about a year ago, online e-commerce was just a developing vertical. However, after the pandemic, several businesses have chosen to go online, and it has become a vertical of prominence and heavily depends on digitalization.

With an internet-focused approach, it is more crucial to meet customer's desires by providing them the right products while remaining in their homes' comfort. The process is not just dependent on supply but incorporates work that occurs behind the scenes. There are various facets, such as parceling, shipping, and delivering the products to the appropriate logistics providers before customers receive the products. With the assistance of an automated dimensioning solution, we can easily overcome parceling challenges.





Table of contents

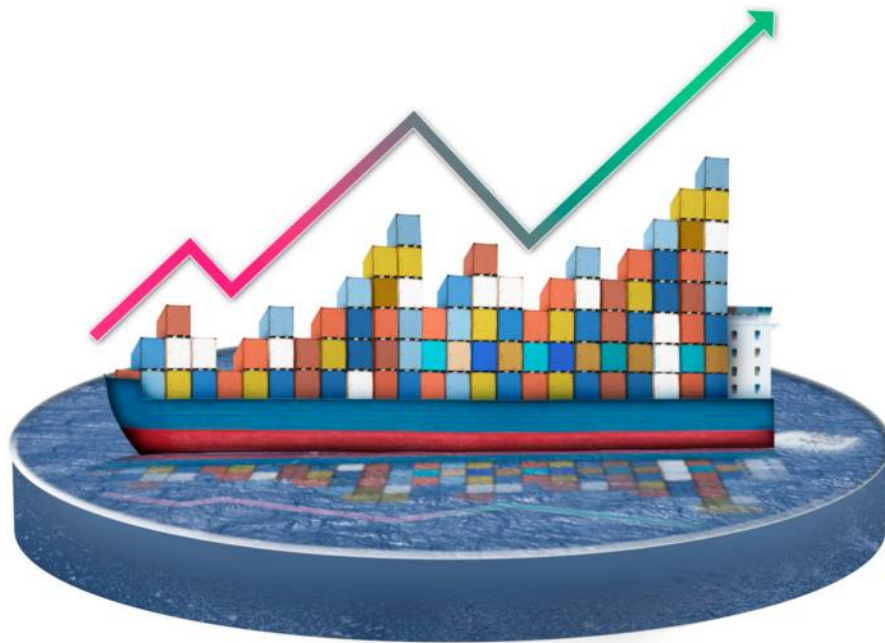
Introduction	3
What is parceling?	5
Why is parceling essential in a warehouse?	6
What is automated dimensioning?	6
Types of automated dimensioners	7
Benefits of adopting dimensioners at the warehouse	8
Industrial benefits of using automated dimensioning solutions	10
Picking an ideal automated dimensioning system for your vertical	12
Familiar parceling challenges	14
Conclusion	19



INTRODUCTION

Of late, most notable businesses have decided to trade online. Building trust and solid relationships with the patrons are of paramount significance, and when businesses succeed at that, they emerge as prominent global businesses.

While growing, most of the about-to-expand industries face problems like space optimization, unnecessary delivery expenses, and parceling challenges because of dimensions. If you are maintaining an e-commerce venture, face these issues, want to enhance your customer service, and accelerate your business, then paying attention to various parceling challenges would help you out.



VMEASURE ASSEMBLE & DEPLOY IN 15 MINUTES



Instantly measures the length, height, and width
of any object and manage all your
dimensioning needs with an AI-driven solution

[Learn More](#)





WHAT IS PARCELING?

The term "parceling" refers to packing two or more items in a single carton. The carton can range in sizes based on the things. These parceling strategies are applied in daily practice to ship and acquire goods across the world. Parcels have many statistical advantages over item-level analyses.



**DID
YOU
KNOW?**

Logistic software
Solution providers
incorporate
Automated
dimensioning and
edge AI into their
solutions to improve
warehouse
productivity

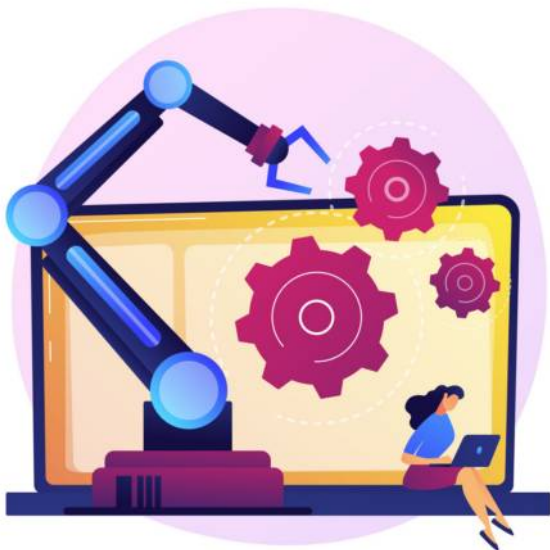
[Learn More](#)

WHY IS PARCELING ESSENTIAL IN A WAREHOUSE?

How the package shifts from the warehouse to customers' doorstep is essential for successful delivery. It is, therefore, essential to understanding the travel journey of a parcel. As the warehouse's progression improves and productivity gets boosted, then there is an increase in revenue.

Each parcel is essential because the dimensions of the parcels determine the required space optimization and shipping tariffs. Therefore, many warehouses attempt to pick the appropriate automated dimensioning solution.

WHAT IS AUTOMATED DIMENSIONING?



Dimensioners are an automation technology utilized in warehouses to determine the volumetric dimensions such as height, breadth, width, and weight of the product parcel before they ship it. These dimensioners are subdivided into large freight dimensioners and package dimensioners.

TYPES OF AUTOMATED DIMENSIONERS



Large freight dimensioner:

It is also referred to as pallet dimensioners. It calculates the precise measurements for palletized or crated freight. These dimensioners can be synchronized with other devices such as barcode scanners, 2D and 3D cameras, and weighing scales to generate the parcels' insights and statistical records.



Package dimensioner:

These devices are used to measure packages of diverse shapes, including individual boxes, cartons, etc. Package dimensioners function similar to pallet dimensioners. These types of dimensioners are mostly utilized in warehouses and distribution centers.





BENEFITS OF ADOPTING DIMENSIONERS AT THE WAREHOUSE

Before choosing the right dimensioner, it is crucial to understand the benefits. Only then would you be able to pick out a suitable type of dimensioner for your warehouse.

Below is a list of the significant advantages of adopting automated dimensioners.



Increased accuracy:

"Accuracy" is an important term in the warehouse industry. By assessing the exact measurements. The unnecessary shipping tariffs could be reduced by assessing the exact measurements, resulting in higher revenue for the business.





Improved space optimization:

It is also referred to as pallet dimensioners. It calculates the precise measurements for palletized or crated freight. These dimensioners can be synchronized with other devices such as barcode scanners, 2D and 3D cameras, and weighing scales to generate the parcels' insights and statistical records.



Reduced human error:

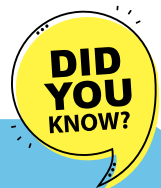
In traditional dimensioning techniques, we utilize tapes and rulers to calculate the parcel's dimensions. However, there could be some discrepancies, and this leads to unnecessary freight charges. With an automated dimensioning method, manual errors can be avoided, and the procedure becomes more efficient.





INDUSTRIAL BENEFITS OF USING AUTOMATED DIMENSIONING SOLUTIONS

Various small-scale and large-scale warehouses, logistics, transportation, and parcel industries can benefit from automated dimensioning solutions that undertake multiple tasks such as estimating the weight and dimensions, scanning barcodes, and bettering the space requirements. Considering all these factors, most warehouse industries opt for dimensioning solutions in their ventures.

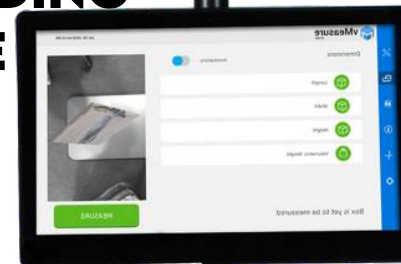


Using Camera enabled Automated dimensioning solutions, you can use bolt-on AI applications for broken box detection or package optimization without additional investment?

[Learn More](#)

VMEASURE PARCEL PRO S100

100 PARCEL IN 15 MINUTES INCLUDING LOADING & UNLOADING TIME



Instantly measures the length, height, and width
of any object and manage all your
dimensioning needs with an AI-driven solution

[Learn More](#)



PICKING AN IDEAL AUTOMATED DIMENSIONING SYSTEM FOR YOUR VERTICAL

Incorporating new technology in your warehouse could seem like a daunting task, and most employees no longer favor regular changes in the workplace. But with the help of a dimensioning system, you can now calculate dimensional data such as length, breadth, height, width, and weight.

These dimensional data are crucial for calculating the shipping cost, estimating storage space, and so on. As soon as you have identified your ideal dimensioner, it is vital to install it and integrate it into your existing system.



Below are a few significant queries to ask before choosing an ideal automated dimensioning system:

- What are you looking for in a dimensioner?
- How do you plan to take advantage of the dimensional data?
- The willingness to spend on equipment.
- Installation and integration of equipment.

Currently, the coronavirus pandemic has shifted the work paradigm, and most of it is online. E-commerce is a significant one among them. Digital shopping has expanded enormously and has both advantages and disadvantages. To make successful shipping, it is essential to focus on every stage, from ordering a product/item to delivering it to the customer's doorstep.





FAMILIAR PARCELING CHALLENGES

Most online e-commerce faces two recognizable challenges during parceling:



Increasing cost:

This is a phase where both the proprietors and customers face an undesirable expense issue. The primary reason major parcel businesses face rising costs is due to dimensional weight rates. This dimensional (DIM) weight-based density is commonly used to determine the price of the package. The DIM is usually calculated by multiplying the height, length, and width of the package dividing it by the pre-defined divisor.

Most customers expect their product/item to reach them in a day or two. Still, during this period, most of the intermediate vendors face different battles such as unavailability of the product and shipping the product to the longer-distance. They also face other challenges such as transport charges, fuel expenses, and surcharges based on the clients' necessities.

When all of this is calculated, it forces the owners to pay extra payments, and that culminates in increased cost.



Delivery expectations:

In recent years, e-commerce is gaining traction because of fast and free delivery. And the icing on the cake is that this pandemic has shown us that one day and same-day delivery is very conceivable. Based on the package's volume, the delivery can be made within two to five business days.

Then again, several web-based companies request the customers to pick their preferred date and time of delivery. This is beneficial for proprietors to estimate the delivery schedule and reorganize the network-based distributions using multi-node networks to get closer to the customers on an estimated timeframe.



**DID
YOU
KNOW?**

Automated
dimensioning
solutions built on
Stereo-camera tech
are faster and more
accurate than other
types of
dimensioning
systems

[Learn More](#)



Administrative necessities:

Employees engaged in this bit of the segment face various issues. From evaluating the type and number of parcels to be delivered each day to keeping a steady track of products, receiving the customers' feedback, analyzing the availability of the product, including the packaging charges, transportation modes and alternatives, and shipment accuracy, they need to take care of it all.





CONQUERING COMMON PARCELING CHALLENGES WITH AUTOMATED DIMENSIONING SOLUTIONS



Can cut down unwanted shipping cost:

Cost is a significant factor for most fast-paced business verticals. With the right automated dimensioning system, parceling can be easily achieved. The dimensional data can be measured in less than a second, resulting in the needed space to mitigate unnecessary transportation charges.





Could easily navigate the parcel location based on barcodes:

By integrating a barcode scanner with the automated dimensioning systems, we can easily track the parcel's location. It helps to update the customer by providing them a web link to track their orders by themselves.



Can detect defects in packages:

Identifying fragile or damaged products is the best way to avoid customer dissatisfaction. With the automated dimensioning calculation, the dimensional data is agile and straightforward, and also, the solution estimates the products that are fragile and defective in less than a second. The camera is fixed to capture the image and helps to identify the defect in the parcel. These data are later utilized for various measuring analytics.





CONCLUSION:

As e-commerce continues to expand globally, industries need to work harder to meet customers' needs. We have now introduced various automation technologies to achieve higher productivity and decrease manual errors. Most e-commerce retailers are continually fighting an uphill battle of reducing delivery times. By picking the right automated dimension solution, we can easily conquer the common parceling challenges.





CHECK OUT THE COMPUTER VISION ENABLED AUTOMATED DIMENSIONING SYSTEM FOR WAREHOUSES AND ORDER FULFILLMENT CENTERS



Minimum Dimensioning: 10x10x10 cm



Maximum Dimensioning: 50x40x30 cm



Accuracy

+/- 5 mm for cubes and cuboids

+/- 10 mm for non-cuboidal shapes

Dimension:



Cubes



Cuboids



Polybags



Tubes



Irregular shapes

WANT TO DEMO/ EVALUATE VMEASURE PARCEL PRO S100?

Connect with us

visiting us

sales@visailabs.com

www.visailabs.com/vmeasure